

Every effort has been made to ensure the accuracy of the information on this map. However, it is not a precise survey document and Council accepts no liability for errors or omissions.

Hervey Bay City Planning Scheme

LEGEND

- Pialba Business**
- Business**
- Mixed Use**
- Neighbourhood Business**
- Service/Trade**
- Industry**
- High Density residential**
- Medium Density Residential**
- Low Density Residential**
- Park Residential**
- Rural Residential**
- Emerging Communities**
- Special Purposes**
 - SP 1 Education & Training Facilities
 - SP 2 Government Purposes
 - SP 3 Hospitals
 - SP 4 Community & Cultural Facilities
 - SP 5 Telecommunications
 - SP 6 Public Utility
 - SP 7 Cemeteries
 - SP 8 Retirement Villages
- Open Space**
- Conservation**
- Particular Development**
 - 585 Harbour Purposes
 - 724 Aerodrome
 - 691 Commercial Outdoor Recreation (Drive-In Theatre, Outdoor Markets including Fairs and Exhibitions), Reception Room with
 - 208 Commercial Outdoor Recreation (Drive-In Theatre, Outdoor Markets including Fairs and Exhibitions), Reception Room with
 - 690 Recreation (Drive-In Theatre, Outdoor Markets including Fairs and Exhibitions), Reception Room with
 - 583 Tourist Development
 - 821 Health and Aged Care Development Urban
 - 934 Resort/Camping Park
 - 726 Special Industries By consent of Council Rural
 - 908 Golf Course/Tourist facility
 - 711 Country Club

MZ - Denotes that zone boundary is described by metes & bounds as a portion of a multizoned lot

Adjoining Maps:

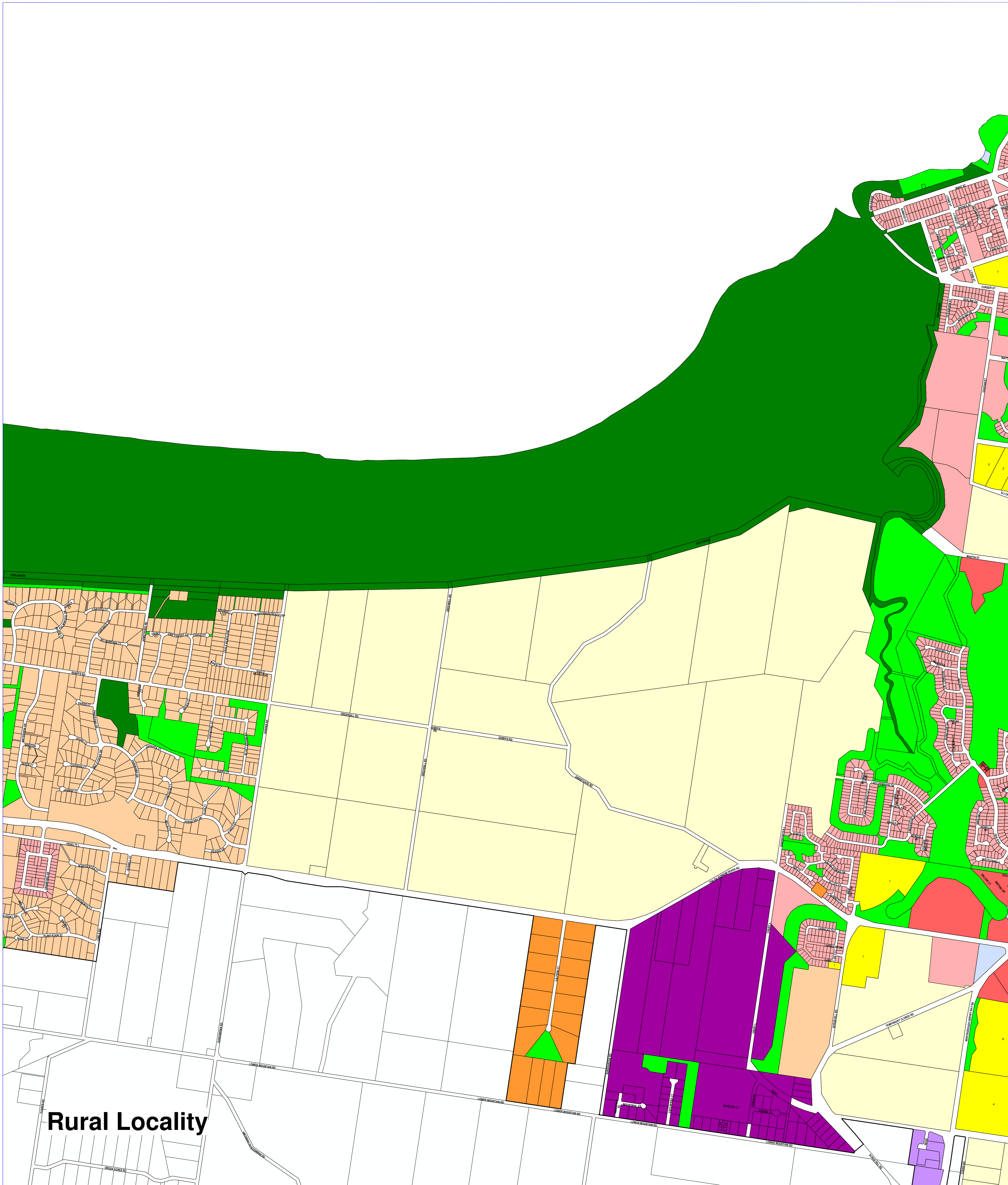


7	8	9
14	15	16



Dundowran Map 8 Urban Locality Zoning Map

Produced: Map Unit of Australia 1994
 Grid Zone: MGA Zone 56
 Source: GDA 1984
 File Date: 6/10/2006
 Approval Date: 13/12/2006
 Geomet Date: 15/12/2006



Rural Locality